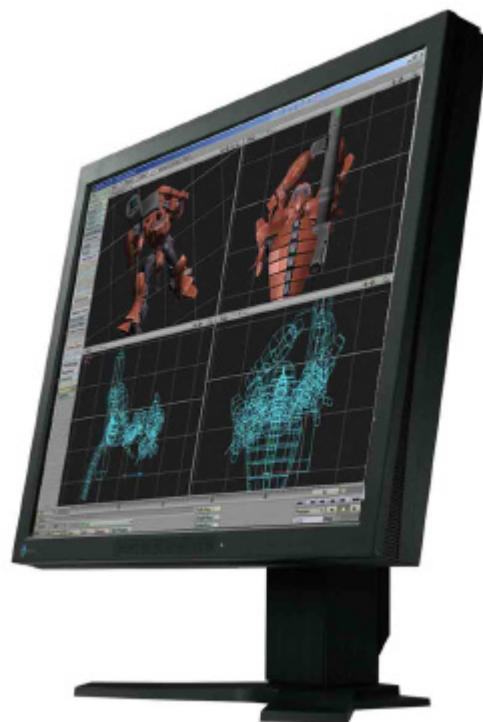


Business Display Solutions

EIZO FlexScan L885

Slim and Sophisticated

The FlexScan L885 delivers the high performance and versatility that professionals working in CAD/CAM, document image processing, finance and other areas demand. It also features a 20.1" screen and small footprint, making it an excellent choice for replacing large screen CRTs. The SlimEdge thin-bezel design saves even more space, and allows near-seamless multi-panel viewing. Offering 1600 × 1200 native resolution as well as extensive colour and image management functions, image quality will always meet professional expectations. Welcome flexibility is provided by digital/analog inputs, multiple mounting and positioning options, a height adjustable desktop stand and a built-in power unit.



Comprehensive Colour Control

Advanced color control functions start with an EIZO developed ASIC that converts 8-bit data to 10-bit, and reassigns it back to 8-bit with the ideal gamma characteristics to produce smoother, more natural color tones. Independent control of hue and saturation is available for each primary (R, G, B) and secondary (C, Y, M) color. This model can also emulate the colour characteristics of other CRT or LCD monitors, as well as colour spaces such as NTSC and HDTV.

Easy on the Eye

The FlexScan L885 makes every image clear and easy to see, with an advanced panel that offers 250 cd/m² brightness, 500:1 contrast ratio, 176° viewing angles and minimal colour shift. To customize the viewing position, users can select landscape or portrait mode², tilt or swivel the panel up to 40° and 70° respectively, and vary the height above the desktop over a range of 82 mm.

Fine Contrast

A one-touch button on the front panel accesses six specialized image adjustment modes: Text, Picture, Movie, Custom, sRGB and External, each with its own settings for parameters such as colour temperature, brightness, gamma and saturation.

Auto Fine Contrast

Operated via ScreenManager Pro for LCD utility software, this allows any Fine Contrast mode to be assigned to a given application. When the application is opened, the screen changes automatically to that mode. Also available is WindowMovie Mode, which alters the illumination level of the background to make video in the overlay window appear clearer and brighter.

Regulatory Standards

The FlexScan L885 complies with current international standards relating to safety, ergonomics, and power management as well as "EIZO Eco Products 2002," an in-house label covering such environmental issues as manufacture with lead-free solder and chrome-free steel plates.

Accessories

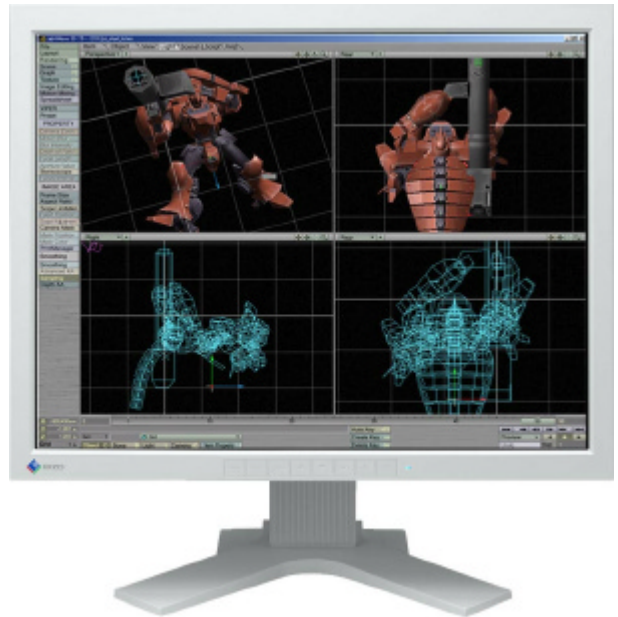
A variety of accessories are available for enhancing convenience and flexibility, such as a panel protector, client management software, an attachable speaker unit, and a height adjustable stand that holds two monitors.

Business Display Solutions

Technical Data

L885 Specifications

Panel Type	51cm (20.1") LCD Panel
Dot Pitch	0.255 x 0.255mm
Display Colour	16.7 million colours
Viewing Angle	H: 176° V: 176°
Scanning Frequency (Analog)	H:24-94 kHz V: 49 - 86Hz
Scanning Frequency (Digital)	H:31-76 kHz V: 59-61Hz (VGA Text 69-71Hz)
Native Resolution	1600x1200
Brightness/Contrast Ratio	250 cd/m ² / 500:1
Dot Clock	Analog: 202.5 MHz, Digital 162 MHz
Response Time	20 ms (typical)
Input Signals	RGB Analog, DVI Standard 1.0
Sync Formats	Separate, Composite
Input Terminals	D-Sub mini 15 pin, DVI 29-pin
USB Port/Standard	1 upstream/USB Standard Rev 1.1
Active Display Size (HxV)	408 mm x 306mm
Viewable Image Size (D)	510 mm
Plug and Play ¹	VESA DDC 2B
Screen Control	ScreenManager , ScreenManager Pro for LCD, One Touch Auto Adjustment Function
Power Management	VESA DPMS, EIZO MPMS, DVI-DMPM
Power Consumption	58W
Power Save Mode	Less than 3W
Height Adjustment Range	82mm
Dimensions (WxHxD)	With Stand 443 x 446-528 x 208.5mm Panel Only 443mm x 347mm x 69mm
Net Weight	With Stand 9.2kg/Panel Only 6.2kg
Tilt Swivel	40° Up, 0° Down/35° Right, 35° Left/90°
Certifications/Standards	TCO'03 (grey), TCO'99 (black), TÜV/Ergonomics, TÜV/GS, c-Tick CE, CB, UL (cTÜVus), CSA (cTÜVus), FCC-B, Canadian ICES-003-B, TÜV/S, VCCI-B, EPA, ENERGY STAR®, EIZO Eco Products 2002



Specifications are subject to change without notice

Options

- Grey Bezel (L885-UK)
- Black Bezel (L885K-UK)
- Grey Multimedia Upgrade (i.Sound L2)
- Black Multimedia Upgrade (i.Sound L2K)
- LCD Protection Sheet
- Screen Administrator Ready

¹Using bundled ScreenManager Pro for LCD software. This software is compatible with the Microsoft® Windows® 98SE/Me/2000/XP OS only. ²Specialty software (sold separately) is necessary for viewing in portrait mode.

With current LCD technology, a panel may contain a limited number of missing or flickering pixels. E&OL

Supplied Accessories

AC power cord, user's manual, signal cables (D-Sub – D-Sub, DVI-D – DVI-D), USB cable, setup guide, EIZO LCD Utility Disk (ScreenManager Pro for LCD, ICC profiles), warranty registration card

Advanced Features

- Colour Management
- Image Scaling
- Image Smoothing
- ScreenManager[®]
- Auto Adjustment
- Plug and Play
- Portrait Mode
- Power Manager
- Off Timer
- Freemount Option
- DVI-I
- SlimEdge[®] Design
- USB
- Input Priority

ENERGY STAR[®] is a U.S. registered mark. As an ENERGY STAR[®] Partner, Eizo Nanao Corporation has determined that this product meets the ENERGY STAR[®] guidelines for energy efficiency. Copyright[®] 1999 Eizo Nanao Corporation. All rights reserved. All product names are trademarks of their respective companies. PowerManager and i . Sound, are trademarks, and FlexScan, EIZO, ScreenManager, and ErgoCoat are registered trademarks of Eizo Nanao Corporation.